

# STRUCTURAL STEEL DETAILING ON TIME AND ON BUDGET

PROVIDING THE VITAL LINK  
BETWEEN A DESIGN CONCEPT  
AND A FINISHED STRUCTURE



CADstruction Drafting Service





## ABOUT US

The presentation of high quality, accurate, easy to read drawings is vital to the design and fabrication process.

**CADstruction's** experienced team have provided industry leading detail drawings to repeat clients since 1996. We have built a reputation for being able to detail complex projects using the worlds most advanced detailing software. We have established solid relationships within the building industry and with our clients, whom we have helped to win major bids based on our pro-active reputation, vast knowledge, expertise and experience.

**CADstruction** is an active member in the steel industry being both a member of The Australian Steel institute and The Australian Institute of Steel Detailers. We are an equal opportunity employer commitment to employee training and development.



## WHAT WE DO

CADstruction provides highly specialised skills in computer modelling for steel detailing.

We have provided our expertise for a variety of different projects benefitting sectors such as Mining, Commercial, Manufacturing and Local Government.

### THESE INCLUDE:

- Mining Structures
  - Platework
- Shopping centres
  - Warehouses
  - Offices
  - Schools
  - Hospitals
- Multi-story buildings

Due to a structural design background, the senior partners offer pro-active solutions for project documentation discrepancies & omissions.

CADstruction actively promotes involvement of detailing at an early stage in the Project Management process.

## CAPABILITY

CADstruction is a member of an alliance of local drafting firms and combined with our partners we provide capabilities producing in excess of 6500 man hours per month. CADstruction uses Tekla Structures which is a world leader in advanced 3D model-based detailing software. We provide the full range of Steel Detailing Services including 3D models for BIM co-ordination, Material Reports, Bolt Lists, CNC files & DXf files. We can customise our report output to suit your data systems reducing the need to re-enter data at your end. CADstruction actively pursues intelligent IT tools and solutions. We provide an in-house server which clients can access drawings from 24 hours a day.

PROVIDING QUALITY, ON TIME & ON BUDGET DETAILING SERVICES.



## KEY PERSONNEL

James Breen  
**Managing Director**  
[james@structuraldetailing.com.au](mailto:james@structuraldetailing.com.au)

Carl Harrison  
**Managing Partner**  
[carl@structuraldetailing.com.au](mailto:carl@structuraldetailing.com.au)

Craig Long  
**Managing Partner**  
[craig@structuraldetailing.com.au](mailto:craig@structuraldetailing.com.au)





## BENEFITS

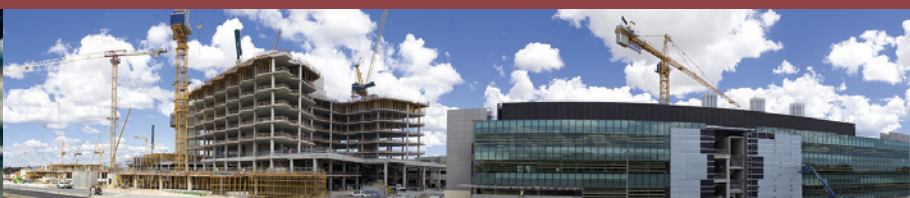
The following are 7 Benefits CADstruction provides over our competitors and the reasons our customers choose to deal with us:

Access to your 3D Model & Project Data online 24/7 via a Fibre Optic connection ...	✓ You will reduce delays with immediate access to your project information.
Receive drawings that are easy to read, clear & precise ...	✓ You will save fabrication time and reduce discrepancies.
Have progressive drawing issues as areas are completed ...	✓ You can commence work sooner and schedule your rollout effectively.
Deal with an organisation that looks at ways to improve the erection process ...	✓ You will have a working partnership looking to maximise your efficiency on site.
Deal with people who can represent you/assist you at meetings throughout the process ...	✓ You will have a working partnership able to present clear information.
Deal with people who interpret the design and ensure it can be constructed safely & economically ...	✓ You will gain the benefit of a pro-active approach to detailing.
Receive our guaranteed urgent attention if your job is underway and you need our help ...	✓ You will not have to wait and will save yourself time, money and stress.



## SELECTION OF PROJECTS

BADGE CONSTRUCTIONS	182 T	Bindoon Range Works
BAE SYSTEMS	2650 SUPPORTS	Gorgon Project Cable Tray Service Supports
BGC CONSTRUCTION	1760 T	NIB Stadium
BGC CONSTRUCTION	115 T	Eaton Fair Shopping Centre
BROOKFIELD MULTIPLEX	325 T	Claremont Quarter STG 1 & 2
CAYS ENGINEERING	210 T	Yandi PC2 Rom Bin Upgrade
CIVMEC	695 T	Alcoa Pinjarra Residue Filtration Facility
BROOKFIELD MULTIPLEX	520 T	Harbour Town project (Now known as Watertown)
BROOKFIELD MULTIPLEX	600 T	Fiona Stanley Hospital buildings
BROOKFIELD MULTIPLEX	175 T	St John of God Murdoch Hospital upgrade
BUILT ENVIRONS	1065 T	Perth Airport (with Rapid Alliance)
FQM AUSTRALIA	700 T	Ravensthorpe Nickel project
HUTCHINS BROS ENGINEERING	130 T	BP Marulan
ITALSTEEL	280 T	Perth Busport
ITALSTEEL	290 T	Yanchep Secondary College
JOHN HOLLAND	190 T	Burrup Jetty
LIGHTHOUSE ENGINEERING	120 T	Campbell Barracks
MONADELPHOUS	880 T	Wiggins Island Dolphin Traveller Package
PINDAN	200 T	Eastern Goldfields Regional Prison (with Rapid Alliance)
PLENARY GROUP	245 T	HMAS Stirling
PROBUILD CONSTRUCTION	300 T	Raine Square
PROBUILD CONSTRUCTION	685 T	32 St Georges Terrace
RAPLEY WILKINSON	210 T	Tropicana Broome
SINOSTRUCT	1200 T	LOY YANG
TERRITORY IRON	130 T	Francis Creek Mining
WA STEEL	163 T	The Camfield



## TESTIMONIALS

### Angus Youngson, Cays Engineering

Cays Engineering has worked with CADstruction Drafting for over 15 years. During that time we have developed an enviable reputation in the market as a "team" that is capable of working together with our clients to help resolve their complex construction challenges, and deliver the highest quality product safely on time and on budget. As a result nearly all our work is repeat business.

CADstruction's stable work force has a wealth of experience, and ensures that we can bring the "same team" to every job we do. Cays engineering would not hesitate to recommend CADstruction Drafting.

"Any issues that arose were **quickly and efficiently dealt with.**"

Steve Ball, Perkins Builders

WE ARE RECOGNISED AS HAVING A  
CAN DO ATTITUDE, BEING SOLUTIONS  
FOCUSED AND PRODUCING WORLD  
CLASS FABRICATION DRAWINGS



**CADSTRUCTION DRAFTING SERVICE**

ABN: 80 657 355 355

Suite 7, 800 Albany Highway, East Victoria Park, WA 6101

Tel: (08) 9472-7457

Email: [cds@structuraldetailing.com.au](mailto:cds@structuraldetailing.com.au)

Web: [www.structuraldetailing.com.au](http://www.structuraldetailing.com.au)